

STAINLESS STEEL DIRECT ACTING SOLENOID VALVE 2/2 SPU220 NF

MAIN CHARACTERISTICS

The SPU 220 is a direct acting 2/2 solenoid valve in stainless steel. It's intended for the shut-off of the networks of aggressive fluids not in charge of. The standard construction is with stainless steel and diaphragm is FPM. Normally closed operating. This valve is operating with no minimum differential pressure. Assembly on horizontal piping, coil on the top.

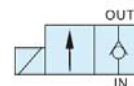
AVAILABLE MODELS

SPU220 : G 1/2" to G 3/4"

Diaphragm : FPM.

Voltages: See on page 3.

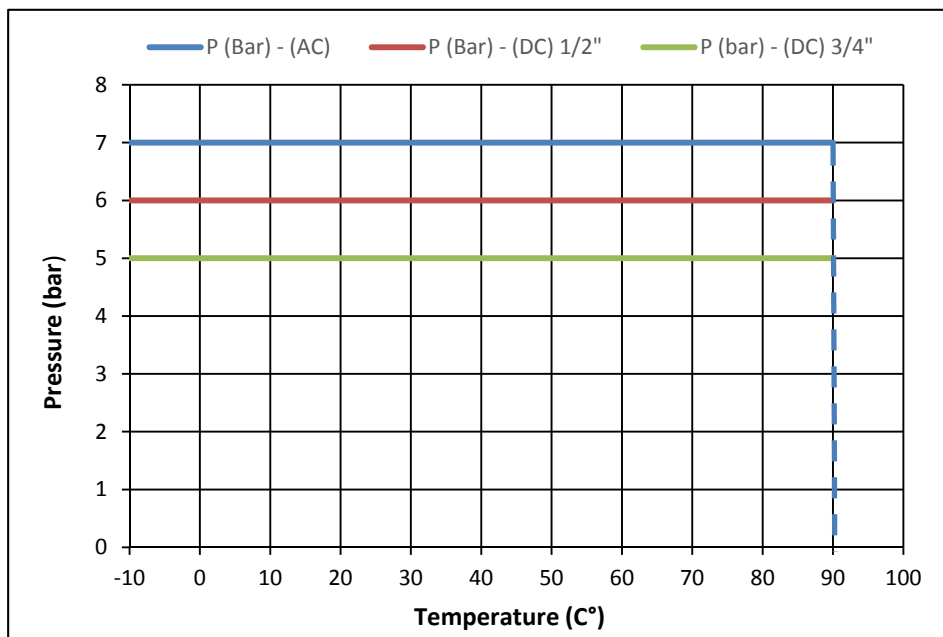
BSP Screwed end connections.



LIMITS OF USE

Electric protection	IP 65	
Max allowed fluid pressure : PS	1/2"	3/4"
Current AC Coil :	7 (bar)	7 (bar)
Current DC Coil :	6 (bar)	5 (bar)
Max allowed fluid temperature : TS	-10°C / +90°C	
Room temperature* :	-20°C / +60°C	

* In direct current, over 40°C, the maximum differentiel Pressure can be reduced.



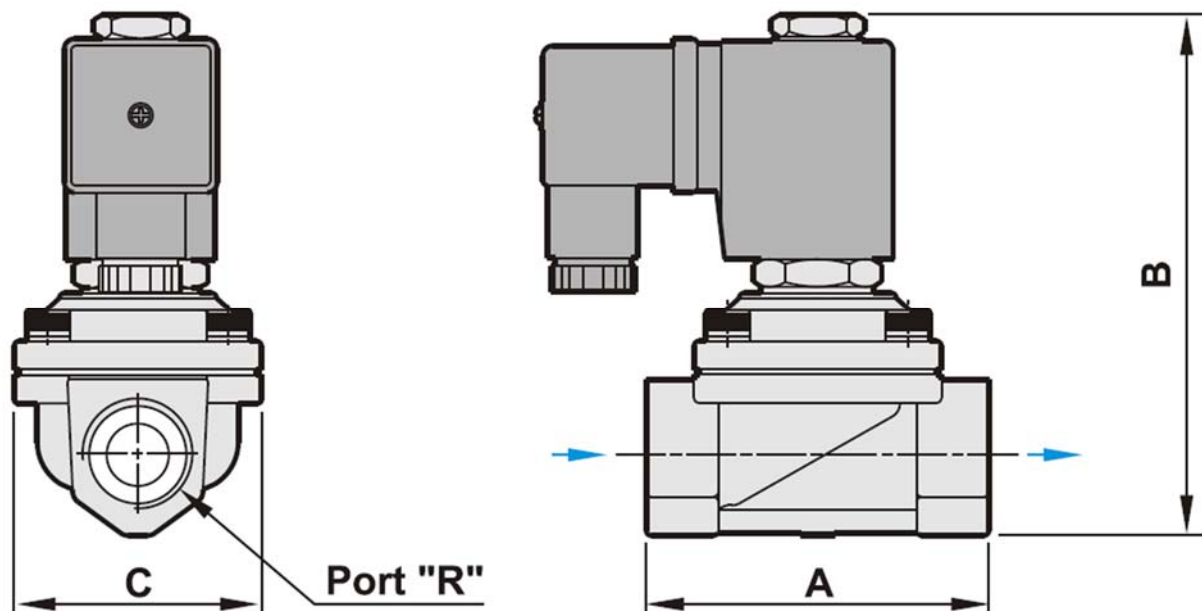
STAINLESS STEEL DIRECT ACTING SOLENOID VALVE 2/2 SPU220 NF

REGULATIONS AND STANDARD OF CONSTRUCTION

Item	Standard	Item	Standard
Pressure Equipment Directive 97/23	1/2" to 3/4": A3 § 3 excluded	Stainless steel materials	EN 1503-1
Low voltage directive CE 73/23	catégory I	BSP Thread	ISO 228
Connector	DIN 43650	Sizing	EN 12516-1

DIMENSIONS (mm) AND WEIGHT (kg)

DN	A	B	C	Weight (Kg)
G 1/2"	66,5	101	48	0,66
G 3/4"	71	89	48	0,84



HYDRAULICS CHARACTERISTICS

DN	Port (R) (mm)	Kv (m ³ /h)	Max Diff. AC. Pressure (bar)	Max Diff. DC. Pressure (bar)	Operating time (s)
G 1/2"	13	3,2	7	6	20-60 ms
G 3/4"	20	6,9	7	5	

STAINLESS STEEL DIRECT ACTING SOLENOID VALVE 2/2 SPU220 NF

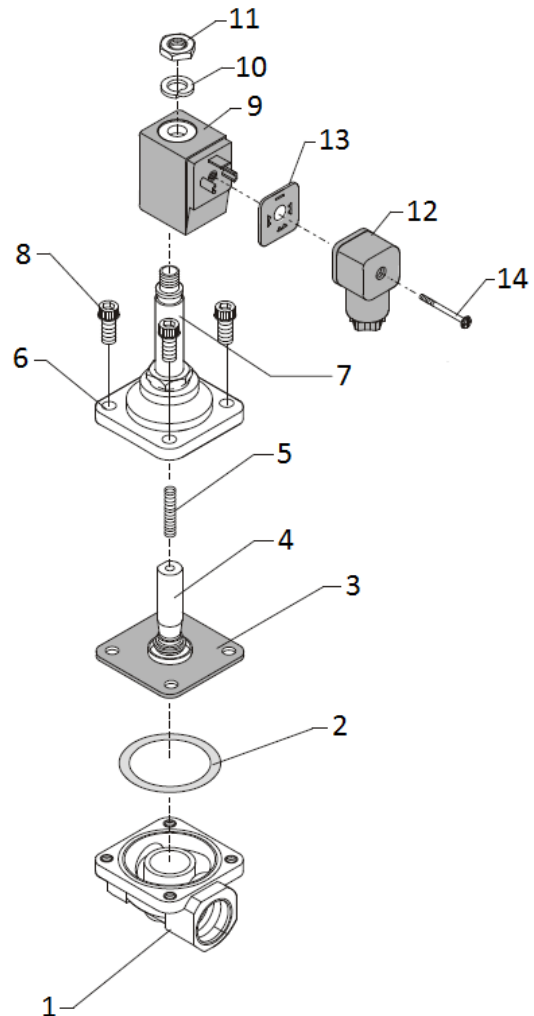
ELECTRIC CHARACTERISTICS

Coil classified F. Duty 100%. Connecting by connector T30.

Coil	Current	Available voltages (V)				Frequency		Power consumption
	AC Coil	24	48	110	230	50 Hz	60 Hz	18,1 VA
	DC Coil	12	24					15 W

CONSTRUCTION

N°	Item	Material
1	Body	Stainless steel 1.4408
2	Gasket	PTFE
3	Diaphragm	FPM
4	Plunger	Stainless steel 1.4301
5	Spring	Stainless steel
6	Cover	Stainless steel 1.4408
7	Tube guide	Stainless steel 1.4301
8	Screw	Stainless steel 1.4301
9	Coil	PBT +30 % GF
10	Washer	Zincated steel
11	Nut	Zincated steel
12	Connector	Plastic
13	Gasket	NBR
14	Screw	Stainless steel 1.4301



MOUNTING

Installation in every position except horizontal pipe with coil towards the bottom.

Respect the sense of flow indicated by the arrow marked on the body.

For an use on liquids, the installation of a strainer for upstream protection is recommended.

Conform to the assembly instructions supplied with the solenoid valve.

STAINLESS STEEL DIRECT ACTING SOLENOID VALVE 2/2 SPU220 NF

SPARE PARTS

Coil (item 9)							Connector
Voltage	230V 50/60Hz	24V 50/60Hz	48V 50/60Hz	110V 50/60Hz	12V cc	24V cc	T30
Code	980550	980551	980553	980554	980556	980552	980696
Diaphragm (item 3)							
DN	1/2"				3/4"		
FPM	980580				980581		

OPTION

Diaphragm : EPDM

NPT thread according to ANSI B1.20

ATEX type (SPU 220X)